



● CONCILIO

# London's Green Surge

# Introduction

London's local elections will test Labour's position in the capital, with the Green Party now competing more directly in areas with high concentrations of younger renters, graduates and left-leaning voters. Recent YouGov polling puts the Greens on around 22–23% across London, just behind Labour on roughly 26%, with support rising to 36% among 18–24-year-olds, pointing to a shift in voter behaviour, particularly in inner London.

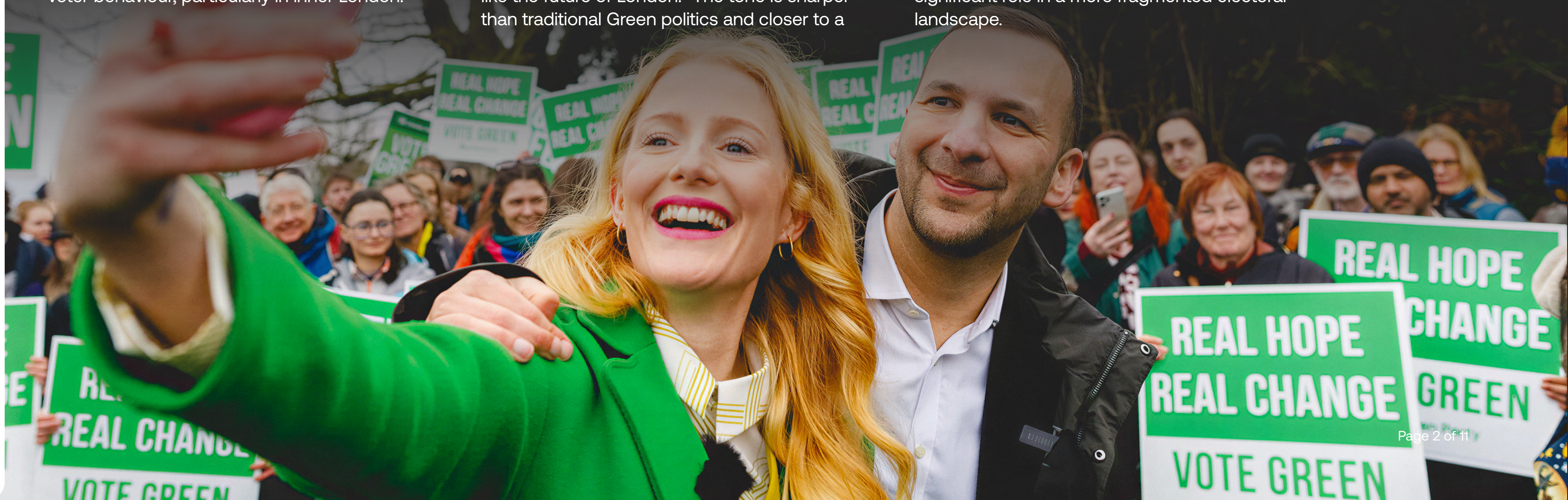
Momentum has been reinforced by a recent by-election win in Gorton and Denton, which led to a surge of more than 15,000 new members and strengthened campaign capacity ahead of the elections. The party's messaging has broadened to focus on affordability, including rents, bills and public services, alongside its environmental platform, with Zack Polanski arguing the Greens "look like the future of London." The tone is sharper than traditional Green politics and closer to a

broader affordability campaign than a purely environmental one. This report assesses how these trends could translate into results, focusing on Hackney, Lambeth, Lewisham and Waltham Forest, as well as areas where the party could hold the balance of power.

Overall, the Greens appear positioned to increase their representation and play a more significant role in a more fragmented electoral landscape.



**Sehj Kaur**  
Consultant



# Table of Contents

PAGE	04	What is driving Green Support?	➤
PAGE	05	Green Breakthrough Potential in London	➤
PAGE	06	Hackney: The Top London Target	➤
PAGE	07	Labour Under Pressure in Lambeth	➤
PAGE	08	Lewisham's Labour dominance under threat	➤
PAGE	09	Waltham Forest's split contest	➤
PAGE	10	Other Areas of Green Growth	➤
PAGE	11	Stay Updated	➤



# What is driving Green Support?



## Changing perceptions of credibility

Concern that the Greens are a “wasted vote” has fallen from 50% to 36%, with around half of Londoners say they would consider voting Green, suggesting recent results are starting to shift how seriously the party is taken (YouGov, April 2026).



## Opening up among Labour voters

47% of Labour supporters say they would be open to voting for the Green Party at the next election, pointing to a clear opportunity in Labour-held boroughs where left-leaning voters are looking for alternatives (Opinium, March 2026)



## Shift from climate to cost of living

Only 22% of people considering voting green now say climate change is the main reason they support the party, down from 49% a year ago, while 38% now cite wider policies and values. This shows the party’s appeal is broadening, with affordability and economic concerns becoming more central (YouGov, April 2026).



## Momentum and campaign strength

Following the Gorton and Denton by-election win, Green Party membership rose by more than 15,000 in a week, boosting campaign capacity and visibility ahead of the London elections (Green Party).



● CONCILIO

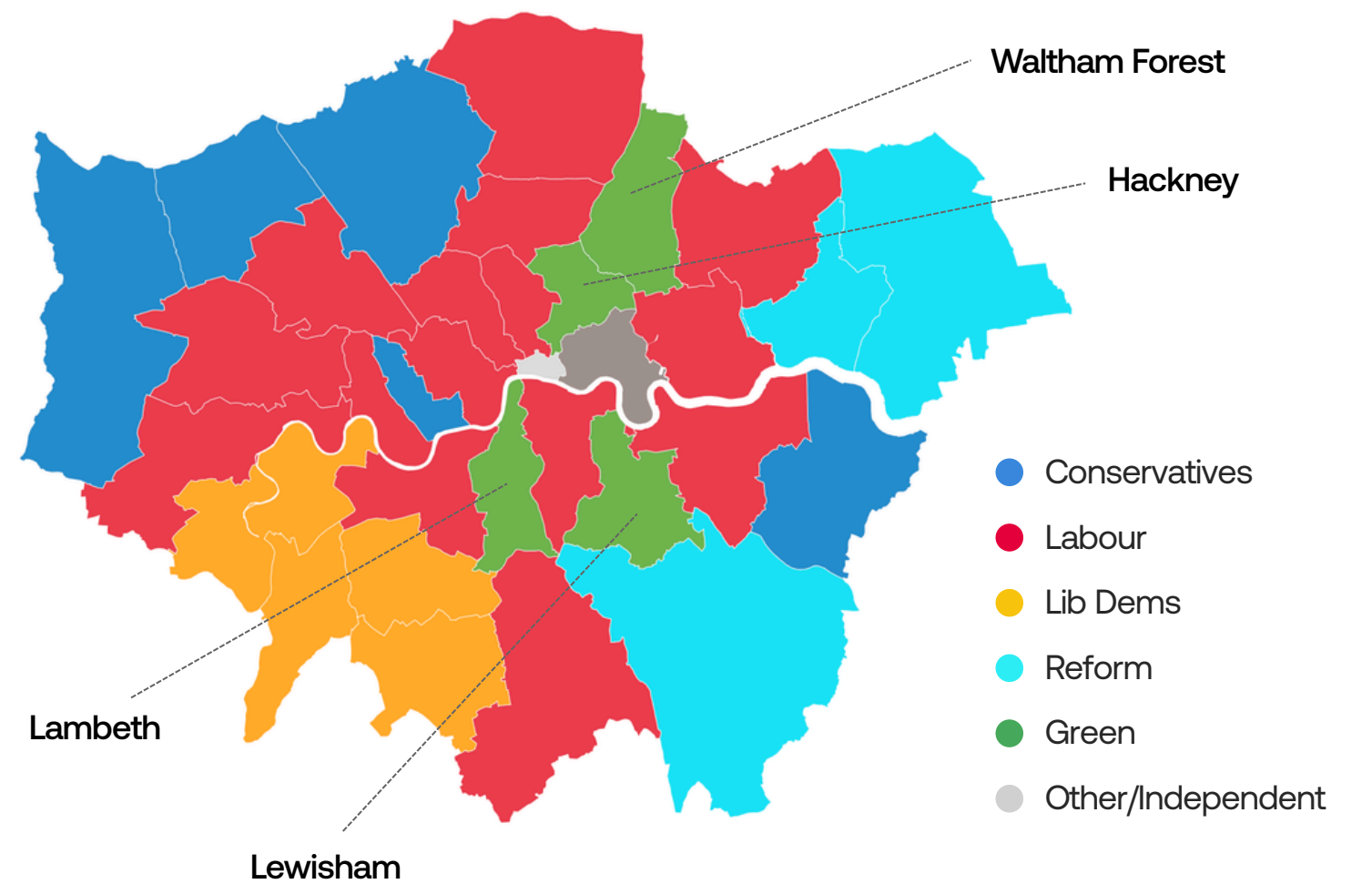
# Green Breakthrough Potential in London

The Greens are now well placed to make significant gains across London, with their vote share approaching Labour's and particularly strong performances in inner boroughs. YouGov's London-wide MRP model puts Labour on around 26% and the Greens close behind on roughly 22%, a rise of around 10 points for the Greens since 2022. On this trajectory, the Greens are projected to come first in boroughs such as Hackney, Lambeth, Lewisham and Waltham Forest.

However, this sits within a highly fragmented and competitive political landscape. Around half of London's boroughs have less than a 5 point gap between the top two parties, meaning relatively small swings could shift control. As a result, the Greens are likely to make clear gains across London, increasing both their vote share and number of seats. They could take control of a small number of councils, while also contributing to a rise in councils with no overall control, positioning them as a more influential and strategically important progressive party across multiple boroughs, even without dominating London local government.

## London council election MRP

Based on modelled responses of 4,548 adults in London polled between March 27 - April 21



Source: YouGov's London council election MRP April 2026



● CONCILIO

# Hackney: The Top London Target

Hackney is one of the Greens' strongest opportunities in London. Long a Labour stronghold, the borough is now more competitive, with Zoë Garbett leading the Greens' mayoral challenge.

In 2022, the Greens won just 3 seats compared to Labour's 50 of 57, but current projections suggest they could rise to around 25 seats, potentially becoming the largest party.

Support is strongest among younger, more transient renters, driven by housing and affordability pressures alongside dissatisfaction with Labour on issues such as Gaza, policing and inequality.

This is reinforced by Hackney's housing profile, with home ownership at around 10%, one of the lowest in the country, and a high proportion of residents in social housing.

The Greens have also built visibility through active local campaigning and grassroots engagement. However, Labour remains well established, meaning the outcome is likely to be close and sensitive to small shifts in support.

## 39%

Projected Green vote share  
in Hackney (Pollcheck)

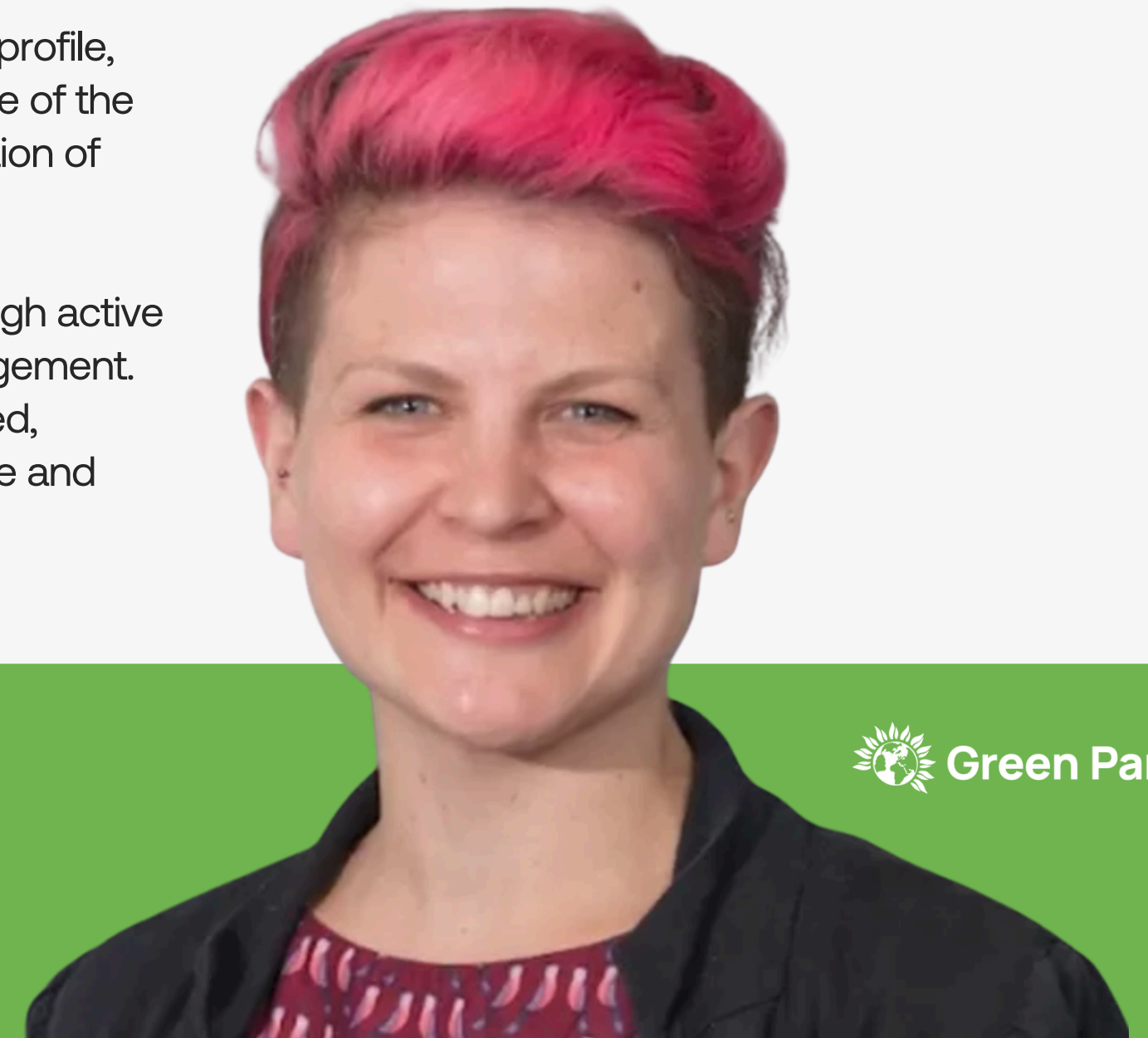


## 300%+

Rise in local Green members  
from January 2025 to January 2026



Green Party



● CONCILIO

# Labour Under Pressure in Lambeth

In 2022, Labour secured Lambeth as a stronghold, gaining 58 of the 63 seats. However, recent projections suggest the Greens are now close to Labour and could emerge as the largest party, with the Liberal Democrats also likely to pick up seats in parts of the borough. Labour remains well established locally, but there are signs that support is shifting, in a diverse and relatively young borough. This has been reflected in local politics ahead of the elections, with former Labour councillor Martin Abrams defecting to the Greens in September 2025, establishing them as the official opposition on the council.

The Greens' campaign has focused on housing, repairs and the cost of living, reflecting local concerns, with Lambeth having over 35,000 people on the housing waiting list, the highest in London. The Greens now have a more established local base than in previous elections, making this a more competitive contest.

The Greens are strongest across Brixton, Clapham and Vauxhall, stretching into Streatham, while Labour's support is now more concentrated in southern parts of the borough.



Greens won **2 seats in 2022**; projected to **rise to around 29**



‘So much harm has been imposed on residents by the decisions Lambeth Labour have taken, especially with regards to housing and the services we all rely on.’

**Scott Ainslie, Lambeth Green Group leader**



● CONCILIO

# Lewisham's Labour dominance under threat

Lewisham has become a central battleground for the Greens' push in London, combining intensive campaigning with clear political movement on the ground, and was chosen as the launch point for Zack Polanski's local election campaign, underlining its strategic importance.

While Labour swept all 54 seats in 2022, the picture is now far more competitive, with four councillors having defected to the Greens since 2025, including Green mayoral candidate Liam Shrivastava.



## Projected to win 27 seats

### Key manifesto promises:

- Deliver 1,000 new social rent homes
- Campaign for rent controls across Lewisham
- Bring services back in-house from contractors
- Support local jobs and cooperative businesses

### Where the Greens are the strongest:

- Inner / north-west Lewisham
- Younger, renter-heavy populations
- Strongest wards: Ladywell, Lewisham Central, Brockley

# Waltham Forest's split contest

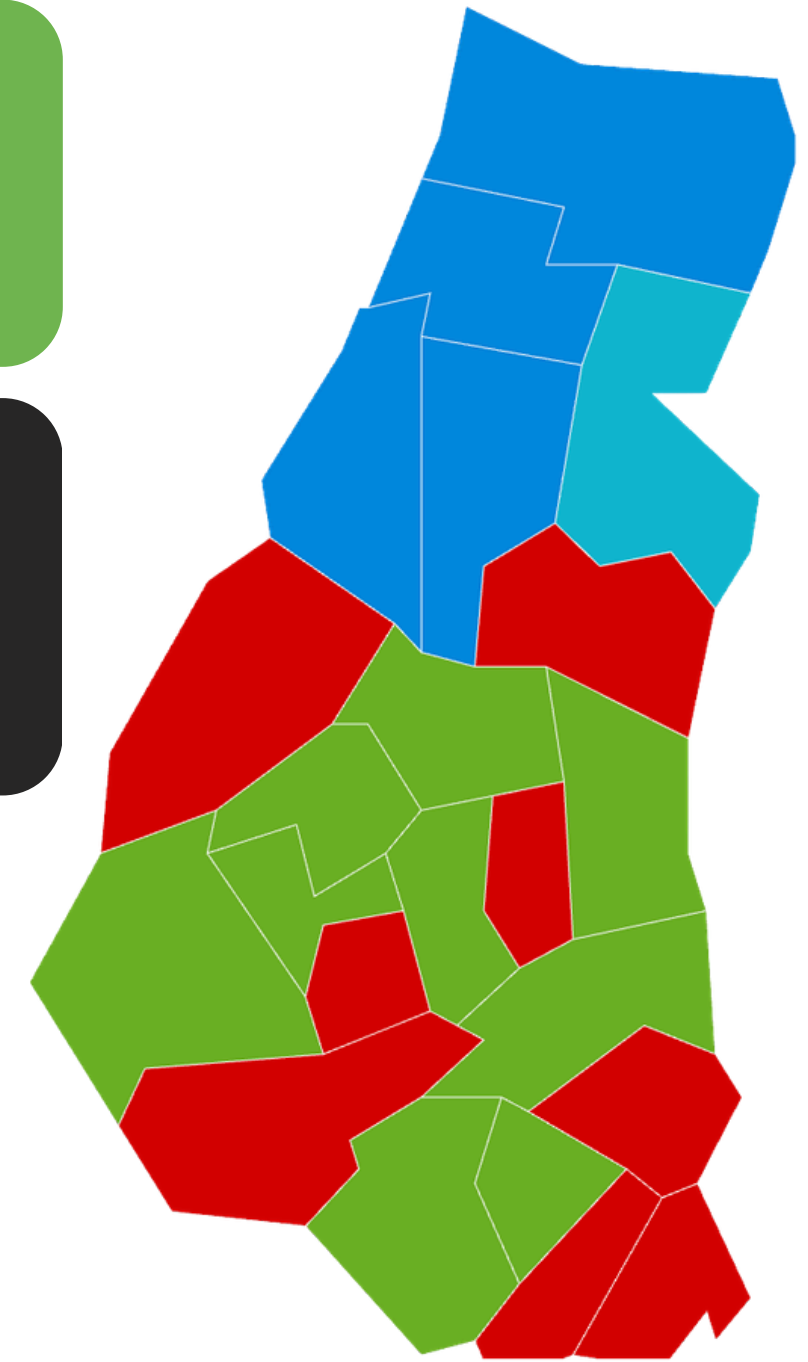
Waltham Forest is likely to be a close Labour–Green contest, with both parties projected to be on roughly 32.6% of the vote and the Greens slightly ahead on seats. This shift is being driven not just by local issues but by a broader political realignment among left-leaning voters. After 16 years of Labour control, the vote is likely to be fragmented, with the Greens strongest in parts of Walthamstow and Leyton, including wards like St James and Leyton. Labour retains more secure areas elsewhere in the borough, but a number of key battleground wards, such as Forest, Cann Hall and Cathall, are expected to be decided by very small margins.



**Greens 2nd in 12 of 22 wards**  
 Clear borough-wide base established (2022)

**630 → 1,400 members**  
 Membership in the borough doubled (from September–November 2025)

- Conservatives
- Labour
- Reform
- Green



Source: Pollcheck



# Other Areas of Green Growth



## Islington

The Greens are building from a solid base, winning 22% of the vote in 2022 and expected to gain around 17 more seats, highlighting wider growth across the borough.



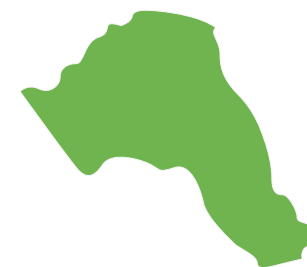
## Southwark

Momentum is being driven by defections, with the Greens now holding six councillors (up from zero in 2022) after several Labour figures switched parties, including previous council leader, James McAsh.



## Haringey

A strong opportunity for a breakthrough, with the Greens polling at around 38%, putting them ahead of Labour and in a position to compete for control. Support is strongest in the west of the borough.



## Camden

A close battle with recent polling showing the Greens at 27% of the projected vote share and Labour with 32%, in a long-standing Labour stronghold.

# Stay Updated

## Get in touch

To find out more about how the rise of the Green party could impact your business, contact:

Email: [hello@conciliocomms.com](mailto:hello@conciliocomms.com)

Phone: 0800 193 0884

[← Back to Table of Contents](#)

[Read our Labour's Lost Vote report here](#)

[Listen to our podcast with Jessica Tarlov on Mamdani and the Politics of Affordability here](#)

[Local election insights from Concilio here](#)